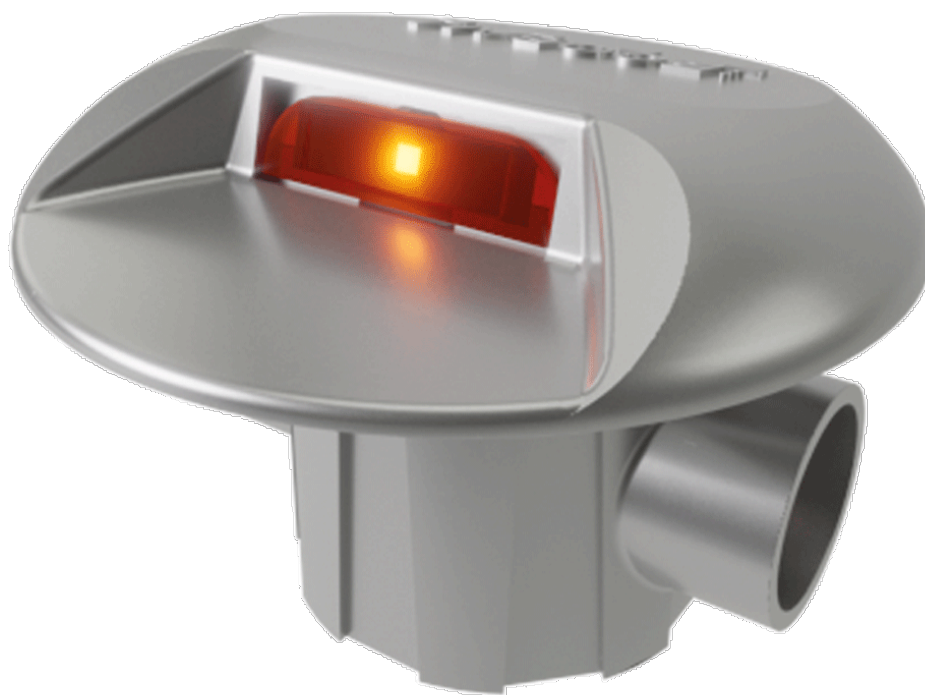


Road reflector

LumiLED

VLULEDB



Optimal signaling system for determining the location and entry of pedestrian crossings, as well as speed bumps manufactured on site (concrete or asphalt).

Increases the driver's level of attention.

They can form transverse lines indicating the need to reduce speed, reinforcing the lines formed by the rough bands.

Increases the driver's attention in advance of the point of danger.

They act as reinforcements for arrest lines at particularly dangerous points.

