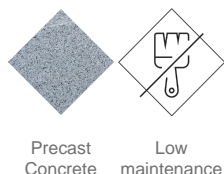


UM375

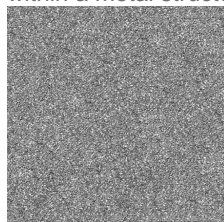
Bench

Silla Lisa



LISA designer chair, total dimensions (length x height x depth) 1200 x 500 x 1200 mm, made of rough, granite-gray precast concrete. It can be placed individually or in groups. It rests on a prepared surface under its own weight.

Concrete: Reinforced concrete with a pickled and water-repellent finish. Manufactured with cement, sand, and gravel embedded within a metal structure. Shot blasting results in a high-quality, durable texture.



Gray



Ref.	A	B	H
UM375	1200	1200	500

