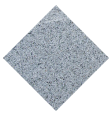




UM372M

Table

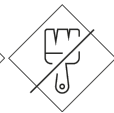
# Kube



Precast  
Concrete



Inclusive  
Product

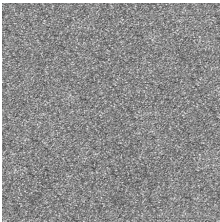


Low  
maintenance

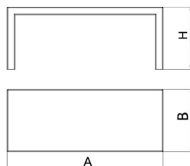


**KUBE designer Table , total dimensions (length x width x height) 2000 x 800 x 800 mm, made of smooth, granite-gray precast concrete. It rests on a prepared surface under its own weight.**

**Concrete:** Reinforced concrete with a pickled and water-repellent finish. Manufactured with cement, sand, and gravel embedded within a metal structure. Shot blasting results in a high-quality, durable texture.



Gray



Ref.	A	B	H
UM372M	2000	800	750

+49 (0) 521 450 131-2 | [mb@bas-mobiliar.de](mailto:mb@bas-mobiliar.de)



V. 2026-06-12 | The constant improvement and evolution of our products may result in some modifications of the technical specifications and characteristics of the products without prior notice.