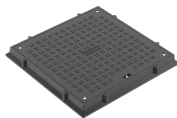
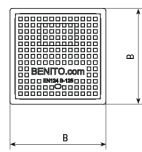
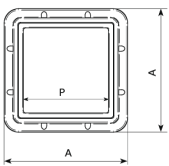
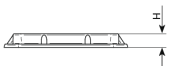


THCO40AT



THCO50A



Hydra Compo is designed to support pedestrian traffic. In particular, pavements or similar surfaces.

- Made from a composite material.
- Compliant with the European standard UNE EN-124.
- Closure with two screws (THCO50A and THCO60A)
- Resistant to corrosion.
- Anti-theft.
- Noise reduction.
- Electric insulation.
- Lightweight and easy to handle.
- Groove to facilitate the opening process.
- Metal non-slip surface.
- Environmentally friendly

REF.	AxA	H	CxD	PxP
THCO50A	600x600	60	540x540	500x500
THCO60A	760x760	60	640x640	600x600