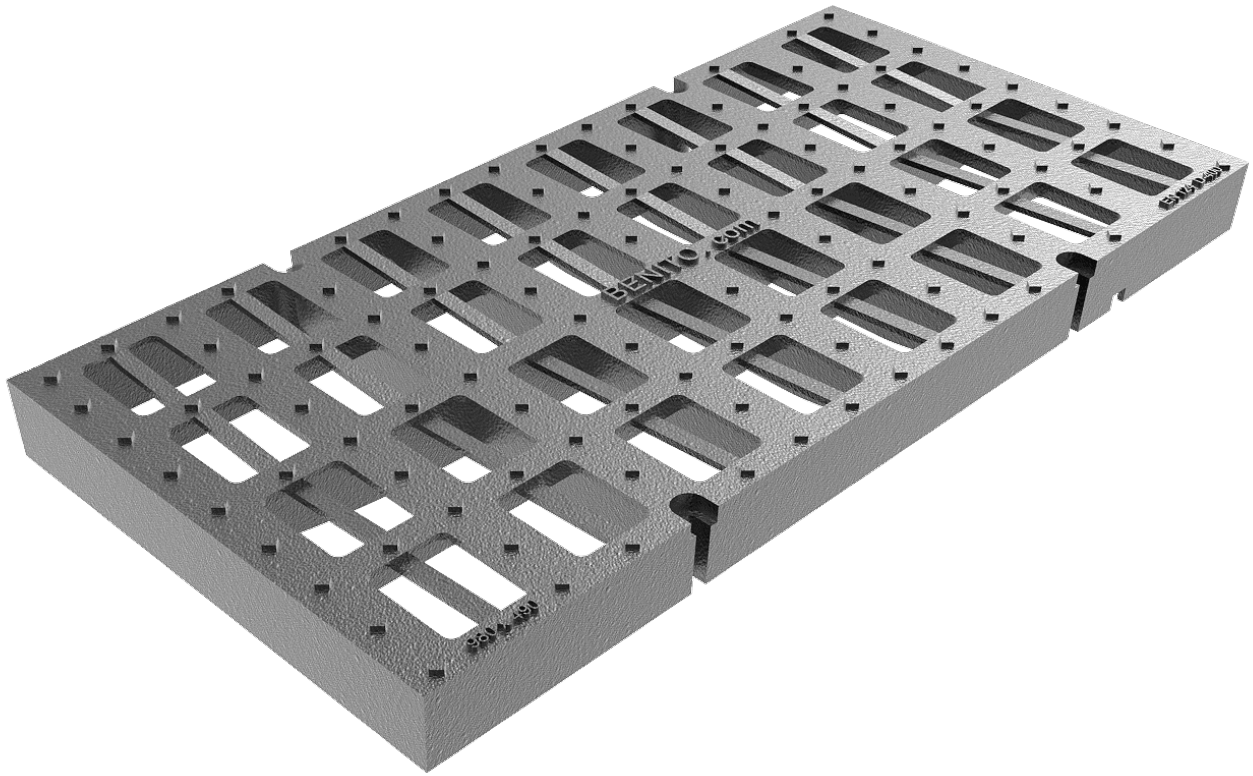


Tango D4

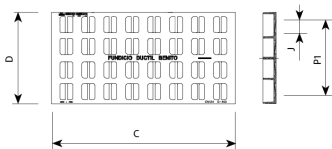
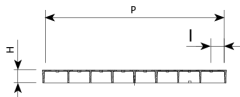
R0199RN4



RC50



PC50T-C1



Tango D4 is designed to support heavy traffic. It is perfect for installing on roads with an ADT of 1.000-20.000, particularly road carriageways (including pedestrian streets), stabilised hard shoulders and parking areas for all manner of vehicles.

- Made from spheroidal graphite ductile cast iron, according to ISO 1083 (Type 500-7) and standard EN 1563.
- Compliant with the European standard UNE EN-124.
- Security screw closure.
- Metal non-slip surface.
- Coated with non-toxic, non-flammable and non-polluting water-soluble black paint.

REF.		A	B	H	dm2	UN.
R0199RN4	D400	980	490	70	16	20