



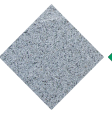
PA672

Litter Bin

Kube



Trash bag



Precast Concrete



Capacity 140L

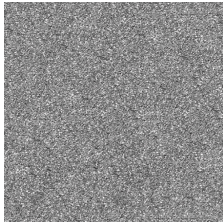


Low maintenance

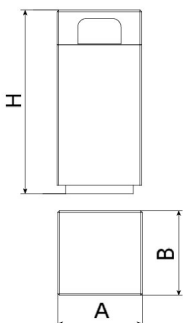


KUBE designer Litter Bin , total dimensions (width x depth x height) 500x500x880 mm, 140 litres, made of rough granite-grey precast concrete.

Concrete: Reinforced concrete with a pickled and water-repellent finish. Manufactured with cement, sand, and gravel embedded within a metal structure. Shot blasting results in a high-quality, durable texture.



Gray



Ref.	A	B	H
PA672S2	510	510	1100
PA672S3	510	510	1100
PA672SA	510	510	1100
PA672SAZ	510	510	1100
PA672SM	510	510	1100
PA672SV	510	510	1100



