

Self-supporting Shade Zone

MÓDULO 5x5

JGV5X5



Shade solutions with textile architecture: Tensile structures perfect for fully or partially covering all types of open spaces and creating cool, shaded spaces.

At **BENITO**, our **structures** are the perfect solution for transforming any outdoor space into a cool, safe, and comfortable environment. Designed with high-quality materials and innovative textile architecture, our tensioned roofs adapt to projects of all sizes and styles, offering unique benefits for each space.

Materials:

The sail anchor points are at different heights, creating double-curved shapes that provide greater stability in the wind. Equipped with eyelets for easy assembly. Rings for anchoring the sails are included. Fully finished and plumb. They have a lower spider for anchoring to the foundation.



Structure, Steel: Circular post, Ø100x3mm, 3m high. Circular cross-members, Ø80x2mm, 5m long. Made of S255JR quality steel, hot-dip galvanized or oven-painted with polyester powder paint. DEGREASING + phosphates + EPOXY PRIMER + ENAMEL 2 / CM / LIN. The pillars will be provided with rings for easy assembly and rings for anchoring the sails. They have a lower base plate to accommodate the foundation. The steel is manufactured in accordance with the CE Marking, standard UNE-EN 1090-1:2011+A1:2012 and sized according to the criteria of CTE DB SE-A. The pillars are fully finished and plumb. Clamps, cables and turnbuckles are included for correct anchoring and tensioning.

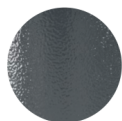
Cables: Made of Ø 8 mm thick galvanized steel.

Clamps: Made of hard aluminum with a polished finish, Ø100 mm, and equipped with cable glands.

Turnbuckles made of M20 galvanized steel.

Foundation anchors are included. (Foundation per 70x70x70 cm pillar. If a reinforced concrete slab with a minimum thickness of 20 cm is available, it can be fixed directly to the ground by bolting.)

- **Aesthetic finish:** Baked with polyester powder paint.



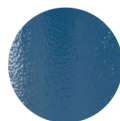
RAL 7016



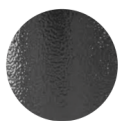
RAL 1021



RAL 3020



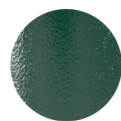
RAL 5010



RAL 9005



RAL 9016



RAL 6005

- **Anti-corrosion finish:** Hot-dip galvanized.



Optional:

Galvanized + Powder-coated with polyester paint. Degreasing + Phosphates + Epoxy Primer + Enamel 2 / CM / LIN.

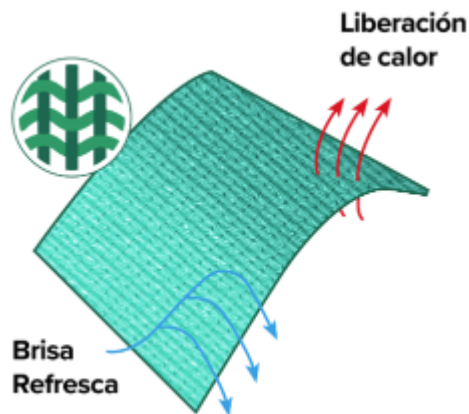


Fabric, HDPE: 5x5m square tarpaulin. Made from high-quality, heavy-duty micro-perforated fabric, specifically developed as a very strong and stable outdoor fabric for tensile structures and shade sails. It offers the best combination of sun protection, strength, and durability, ensuring easy maintenance. Chain-stitch weave, it will not fray or tear, knitted with 100% round monofilament yarn for structural stability. Balanced warp and weft ensures minimal maintenance. HDPE will not rot or absorb moisture. It comes with a 12-year fabric warranty against UV degradation. 90.1% to 94.9% UV blockage reduces sun exposure, allowing for safer and longer outdoor use. Breathable fabric to improve airflow and channel the breeze.

Technical specifications of the FABRIC:

- UV-resistant HDPE knitted fabric yarn
- Composition: 100% Monofilament

- Temperature range (°C) -30 to +70
- Fabric mass (gsm) (AS2001.2.13) 340 gr x m2
- Approximate thickness (mm) 1.6
- Tensile strength - warp: (N) (average) (AS2001.2.10) - 187N
- Tensile strength - weft (N / 50mm) (AS 2001.2.3.1) - 2494N / 50mm

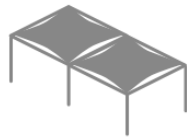


Modular shade structure designed to adapt and expand according to your space needs:



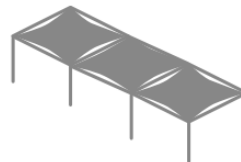
Estructura de
5 x 5 x 3 metros

4 pilares
4 travesaños
1 telas



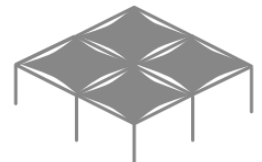
Estructura de
5 x 10 x 3 metros

6 pilares
7 travesaños
2 telas



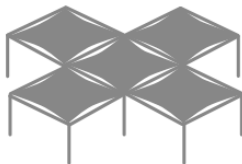
Estructura de
5 x 15 x 3 metros

8 pilares
10 travesaños
3 telas



Estructura de
10 x 10 x 3 metros

9 pilares
12 travesaños
4 telas



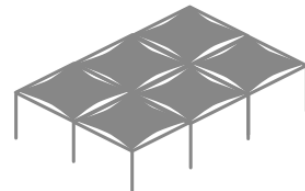
Estructura de
15 x 15 x 3 metros

12 pilares
16 travesaños
5 telas



Estructura de
10 x 15 x 3 metros

12 pilares
16 travesaños
5 telas



Estructura de
10 x 15 x 3 metros

12 pilares
17 travesaños
6 telas

Maintenance:

1. Clean and level the areas of the different facilities.
2. Check that the screws and nuts are tight, paying special attention to those that, due to the nature of the structure, are susceptible to loosening.
3. Check the correct tension of the sail.
4. Inspect that the fabric is in its correct condition.

Advantages of our GEOVELAS:

- **Create cool, shaded spaces** , ideal for enjoying the outdoors in total comfort.
- **Cover areas of various sizes and heights** , adapting to the needs of each project.
- **Inteblend** with the architecture of the environment, combining functionality and aesthetic design.
- **Easy assembly and simple maintenance** , easy disassembly system for winter season

- **Climate resistance:** They prevent rain accumulation and withstand inclement weather such as wind and storms.

Versatile applications for any space:

- **Playground** : They guarantee shade and protection for the little ones.
- **Nursery schools** : They promote safe spaces for learning and outdoor recreation.
- **Public squares and leisure areas** : They provide aesthetics and comfort in areas of community use.
- **Stages and bleachers** : Enhance the experience at outdoor events.
- **Parking** : They protect vehicles from the sun and rain.
- **Sports facilities** : They provide shade for spectators and athletes.
- **Shopping centers, hotels, and campsites** : Designs that add value and comfort to tourist and commercial spaces.

With **BENITO** , make the most of your outdoors with modern and efficient solutions that not only protect but also beautify every corner.
Trust our GEOVELAS for your next project and create unique and functional spaces!

Ground anchoring screws not included.

Projects:

