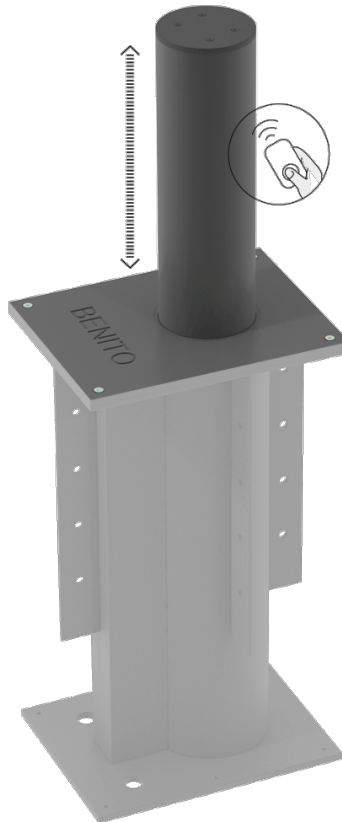


ISO22343



HM3009

Bollard

DEFENDER M30 - S



ISO22343



DEFENDER HM3009 security bollard , made of high-strength steel. Designed to provide effective protection against vehicle impacts, it is installed by embedding it in a foundation. Its robust geometry and balanced proportions guarantee high structural rigidity and great stability after installation. Finished with an anti-corrosion treatment and thermosetting polyester powder paint, resistant to weather and UV rays. Recommended for demarcating pedestrian zones, restricted access areas, or high-security urban areas, combining functionality, durability, and careful aesthetic integration into the urban environment.

DIMENSIONS AND MATERIALS

HEIGHT FROM GROUND LEVEL

FUNCTIONAL FEATURES

SYSTEM

REFLECTIVE BAND

