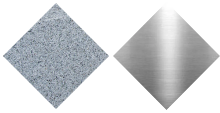


H374L
Bollard
Petrus LED

By BRC Design © © BENITO



Precast
Concrete

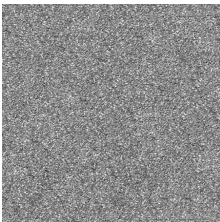
Stainless
steel



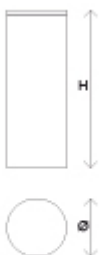
Petrus designer bollard, made of precast reinforced concrete with a finely etched finish, designed to permanently prevent vehicle entry. Finished with brushed stainless steel sheeting.
Optional: WITH LED light crown, for maximum visibility thanks to its red/green LED crown, traffic light function.
Recommended anchoring, with chemical anchor, using three bolts screwed into the base of the bollard

Stainless steel: Structural alloy with a high chromium and nickel content, resistant to corrosion. High resistance to weather, humidity, UV rays and chemical agents present in urban environments. Thanks to the natural formation of a protective passive layer, stainless steel does not require additional coatings, ensuring excellent durability, low maintenance and a clean, timeless appearance – even under demanding conditions such as coastal or industrial areas.

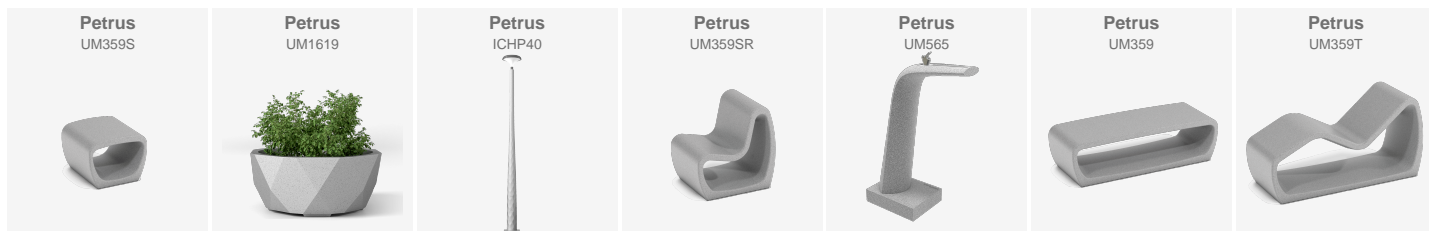
Concrete: Reinforced concrete with a pickled and water-repellent finish. Manufactured with cement, sand, and gravel embedded within a metal structure. Shot blasting results in a high-quality, durable texture.



Gray



Ref	Ø	H
H374L	220mm	800mm
H374	220mm	800mm



V. 2026-05-13 | The constant improvement and evolution of our products may result in some modifications of the technical specifications and characteristics of the products without prior notice.